

User Guide



TSWebCam





Content

- [**Driver requirements**](#)3

- [**Installation**](#)4
 - [*Client installation:*](#)4
 - [*Server installation:*](#)7

- [**How does it work?**](#)11
 - [*Example*](#)11

- [**TSWebCam settings**](#)12
- [**How to open**](#)12

- [**TSWebCamPro license registration**](#)14



Driver requirements

TSWebCam supports the following Microsoft Windows operating systems:

TSWebCam Server:

- Windows 7
- Windows Vista
- Windows 8, 8.1
- Windows 10
- Windows 11
- Windows Server 2008
- Windows Server 2008 R2
- Windows Server 2012
- Windows Server 2012 R2
- Windows Server 2016
- Windows Server 2019
- Windows Server 2022

TSWebCam Client:

- Windows XP (latest update for RDP protocol)
- Windows 7
- Windows Vista
- Windows 8,8.1
- Windows 10
- Windows 11

Both 32bit and 64bit operating systems are supported. TSWebCam requires minimum .NET 3.5 framework to function properly. In case you experience any issues please make sure that .NET is installed. Also opening of dynamic virtual channels has to be supported.

Note: Desktop experience feature is required to be installed on Microsoft Windows servers operating systems in order for TSWebCam to function properly.

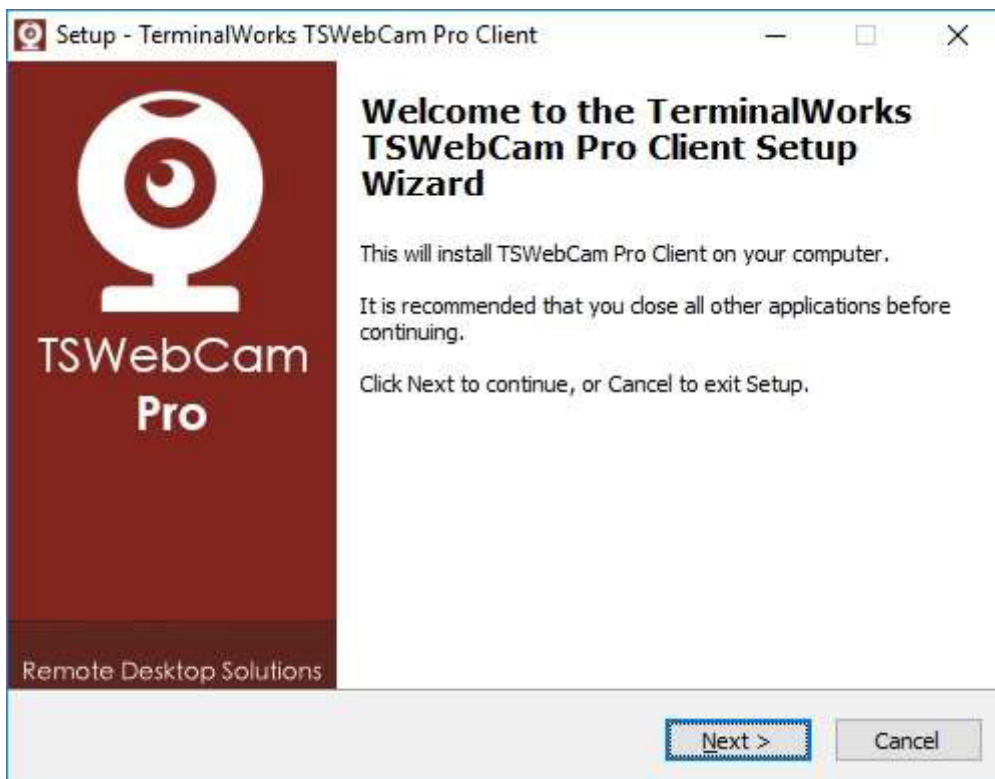


Installation

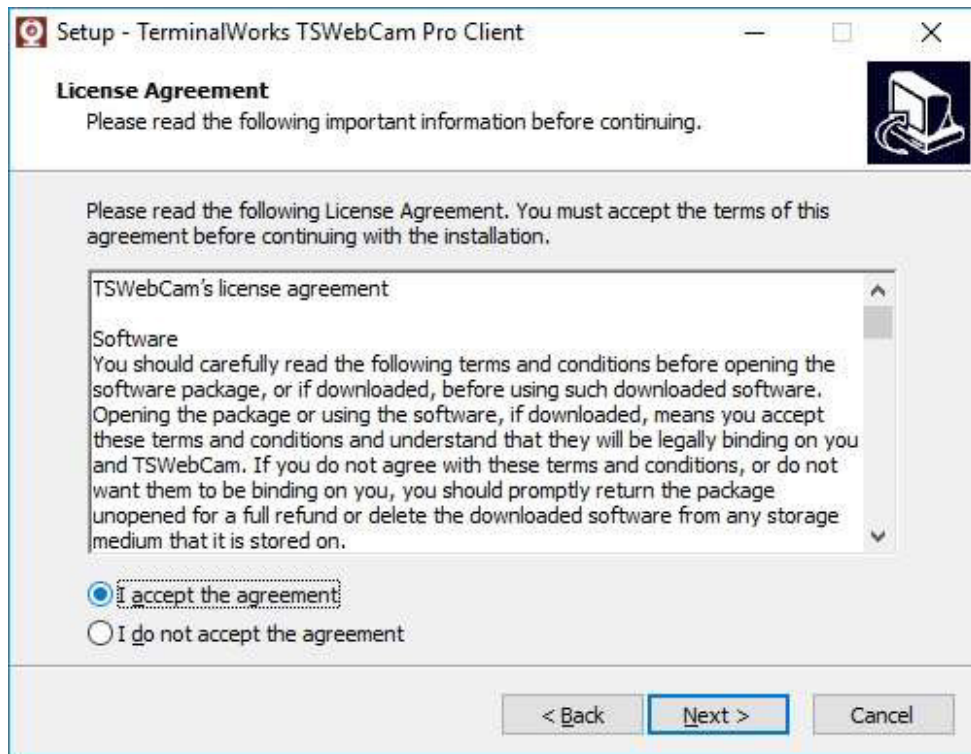
TSWebCam installer comes in two parts:
TSwebCam_Pro_Server.exe and TSwebCam_Pro_Client.exe

Client installation:

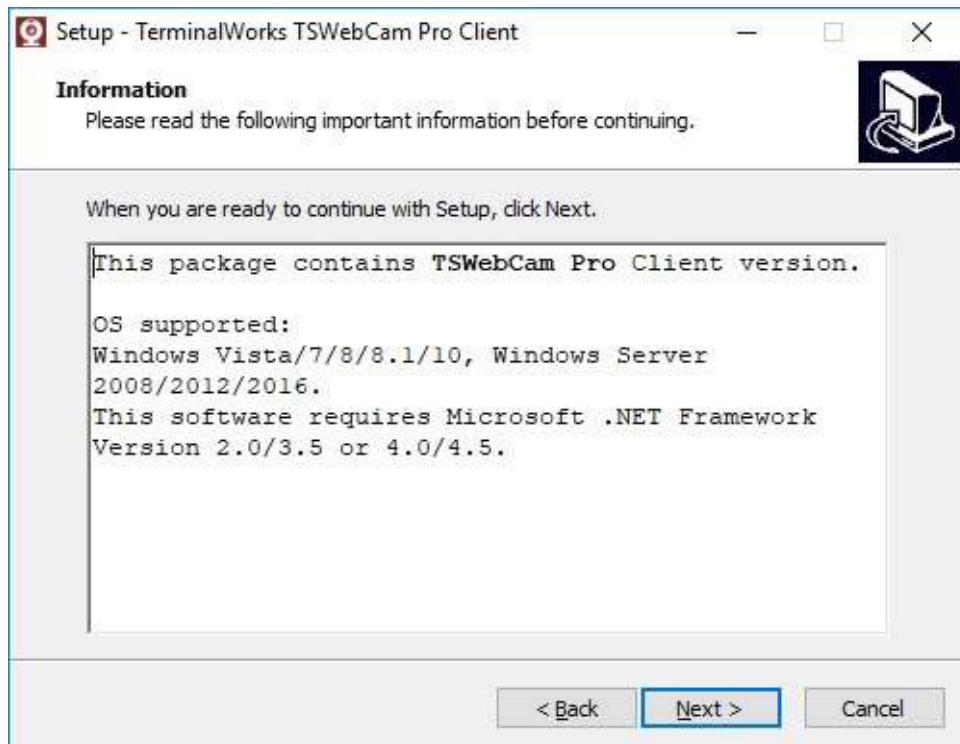
After selecting the client installer file you will have the following welcome screen:



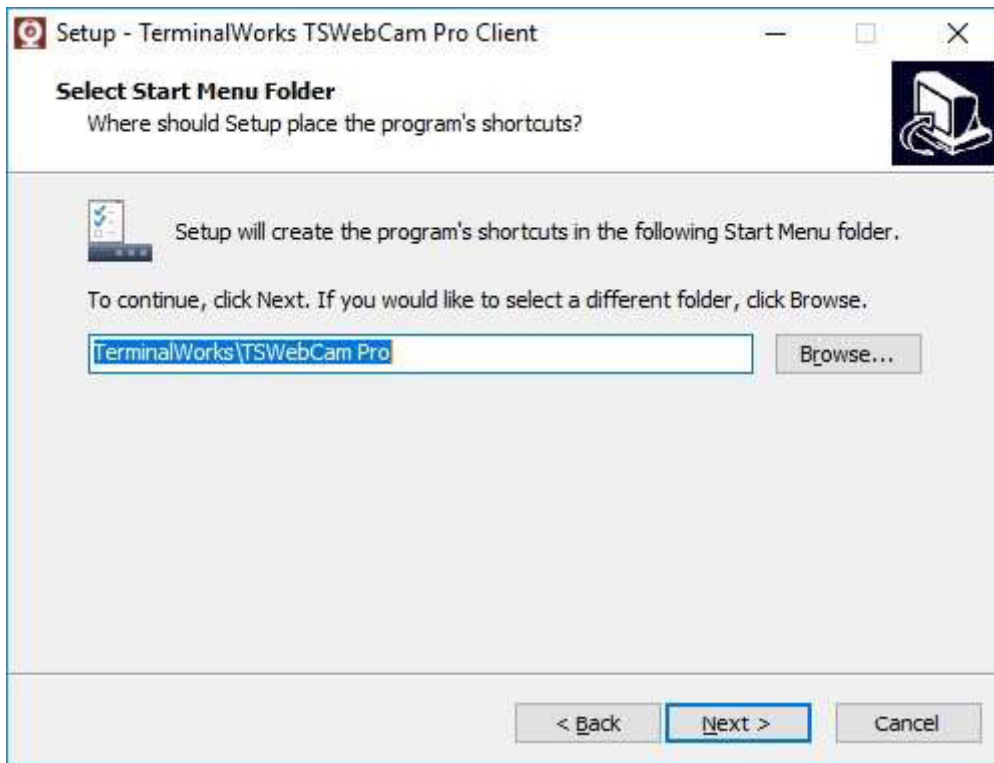
Click on the Next button



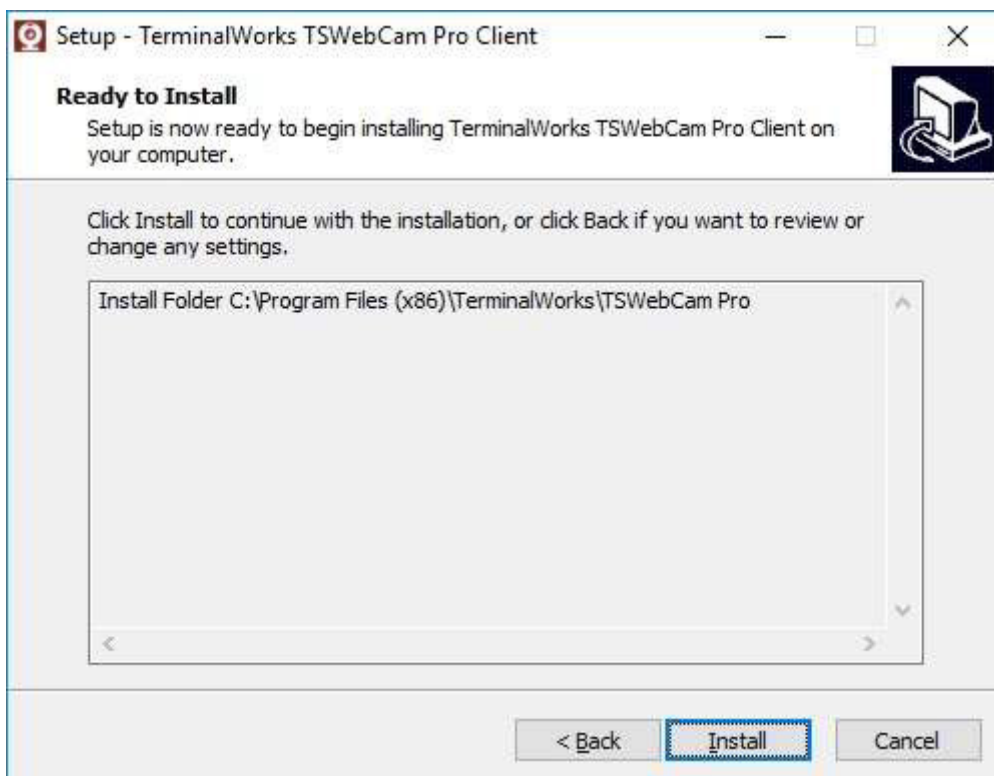
On this screen accept the license agreement and click on the next button.



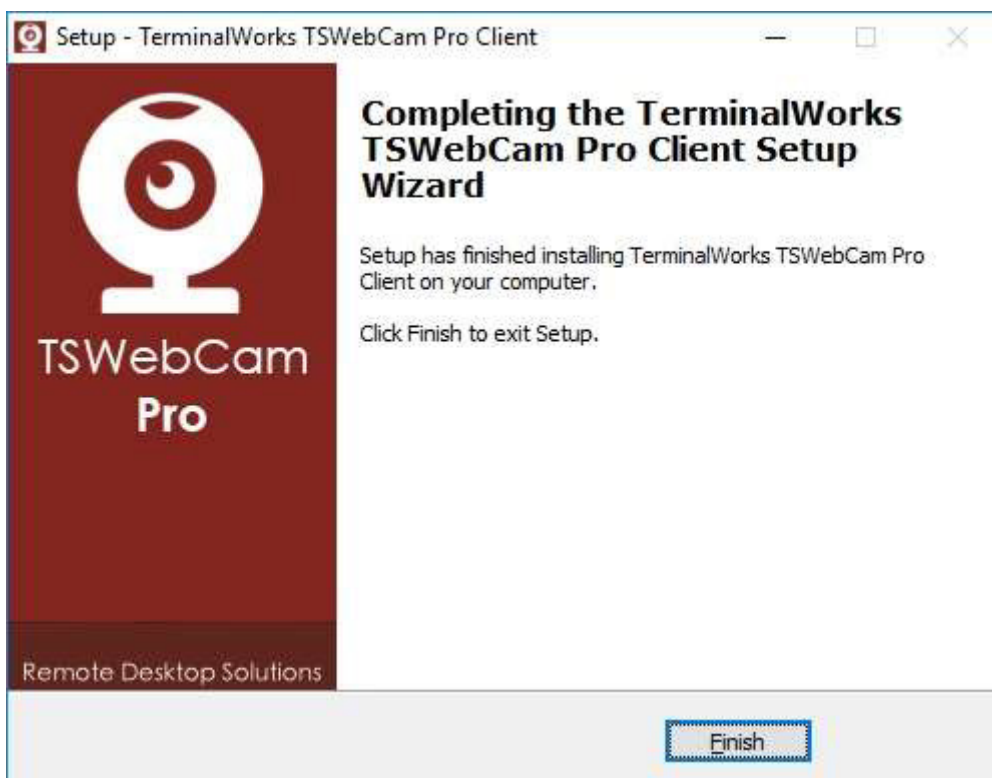
Here you can make sure that you meet the installation requirements and click on Next to proceed.



It is recommended not to change the installation folder, click on the Next button to proceed.



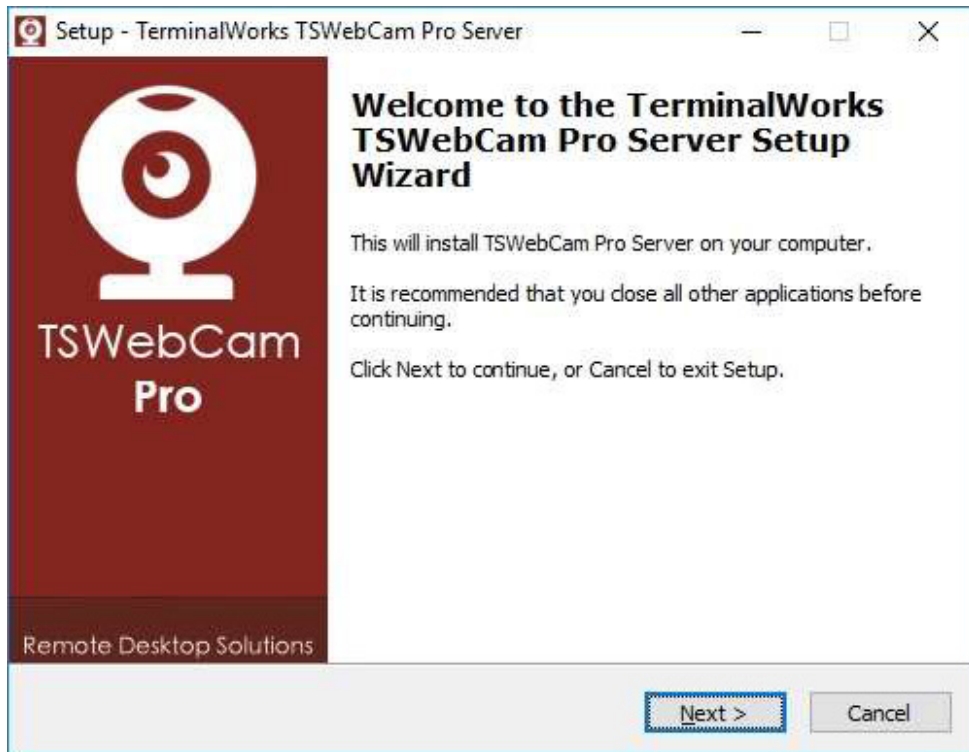
To make the final confirmation click on the Install button.



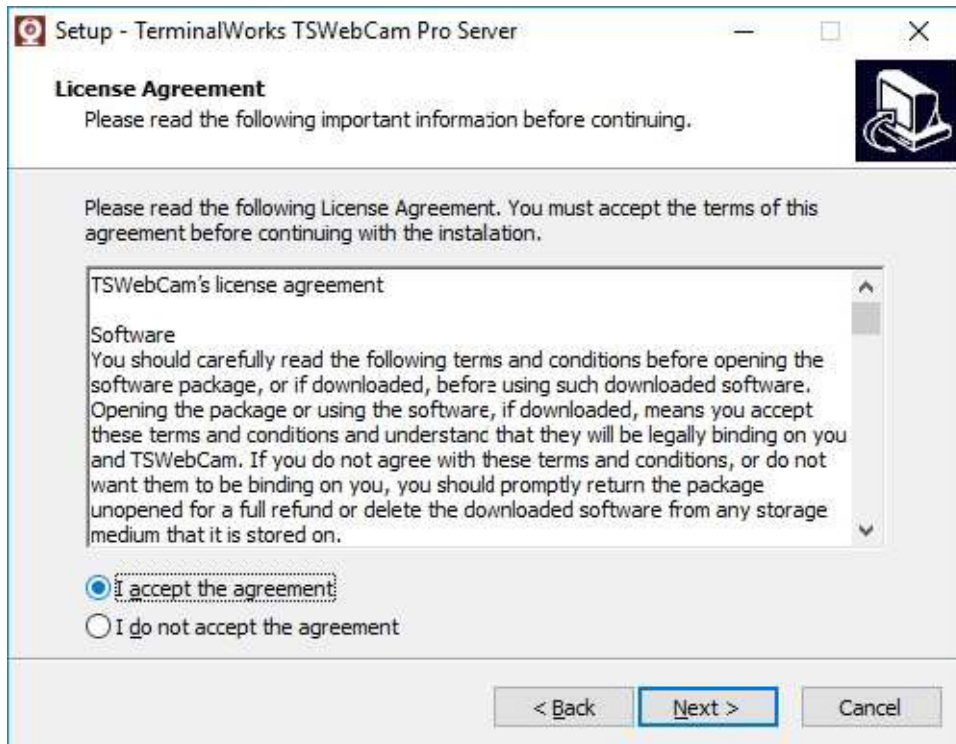
One more click on the Finish button and TSWebCam client is successfully installed.

Server installation:

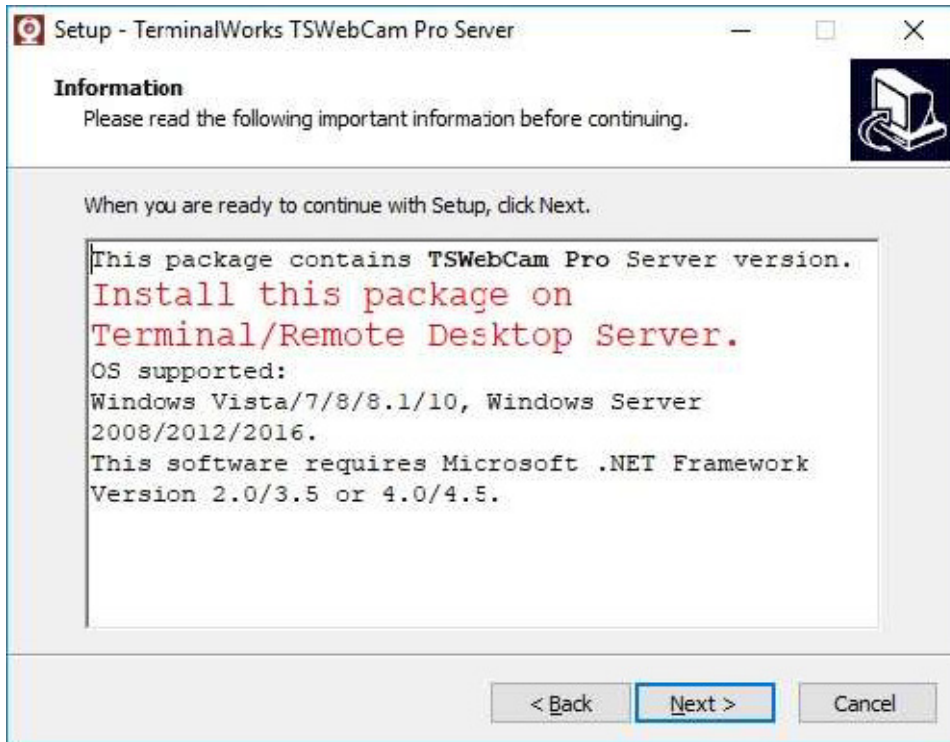
The server installation is quite similar as the client one apart from the warning message that will come up if you do not have the desktop experience feature installed on your server. After running the server part the following welcome window will appear:



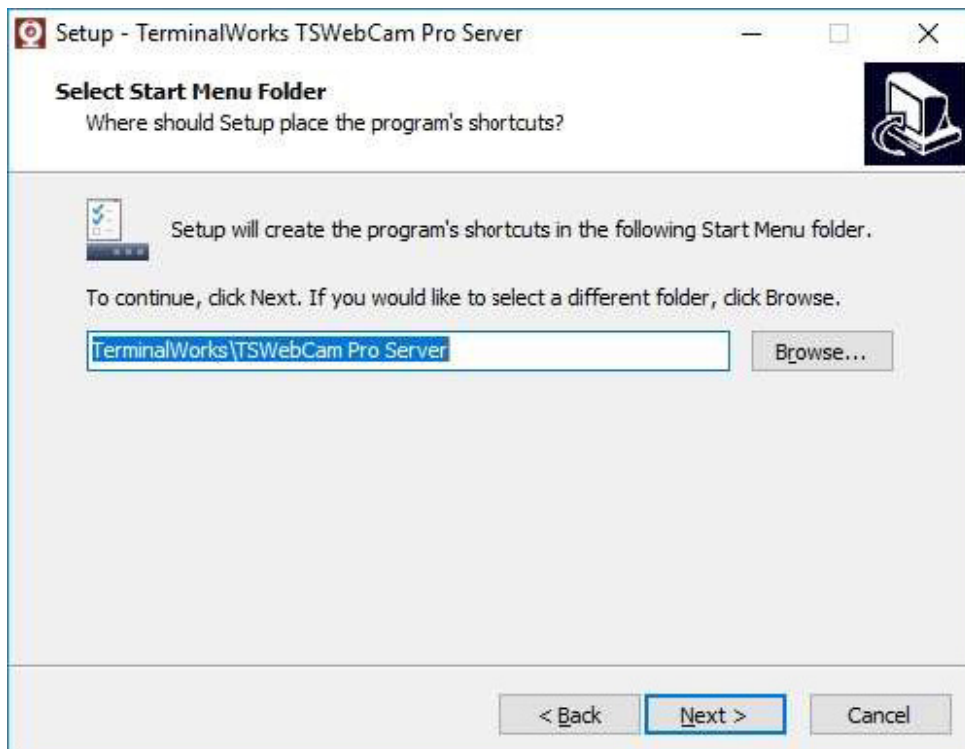
Click on the Next button to proceed.



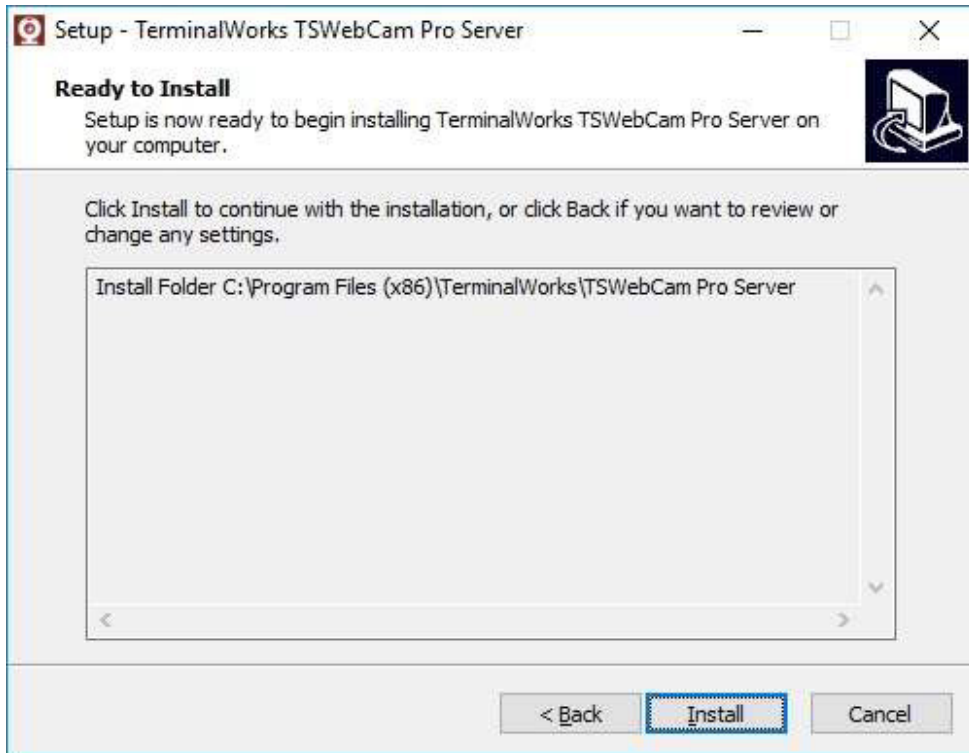
After reading the License agreement accept it and click on the Next button to proceed.



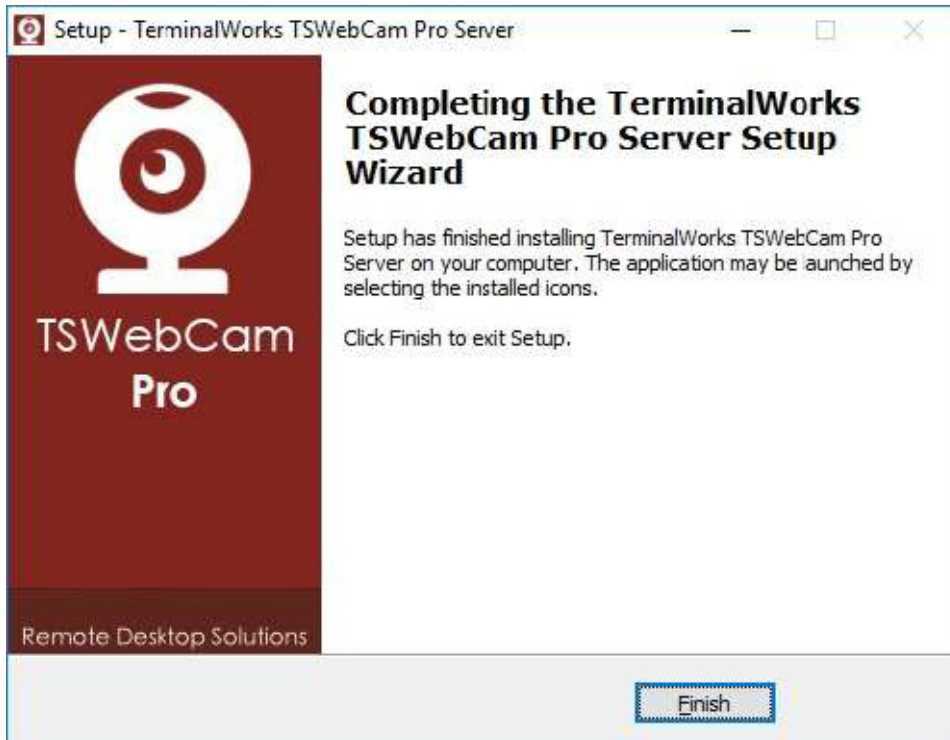
Here you can make sure that you meet the installation requirements and click on Next to proceed.



It is recommended not to change the installation folder, click on the Next button to proceed.



Click on the Install button to confirm the installation.



Click on the Finish button and you have successfully installed the TSWebCam server part



How does it work?

TSWebCam is a RDP webcam mapping tool which maps your local DirectShow web cam to your remote desktop or Citrix server. Now you will be able to use Skype, VLC and remote conference meeting software on your remote desktop server.

It comes with a DirectX compatible image source thus supporting a wide range of applications and hardware. By being fully DirectShow compatible TSwebcam will be also able to map video capture cards, ID scanners and other DirectShow compatible hardware.

It is basically a plug and play solution and after you install the TSwebcam server part on your server you will see a TSWebCamPro selection as a source in your application that uses webcams.

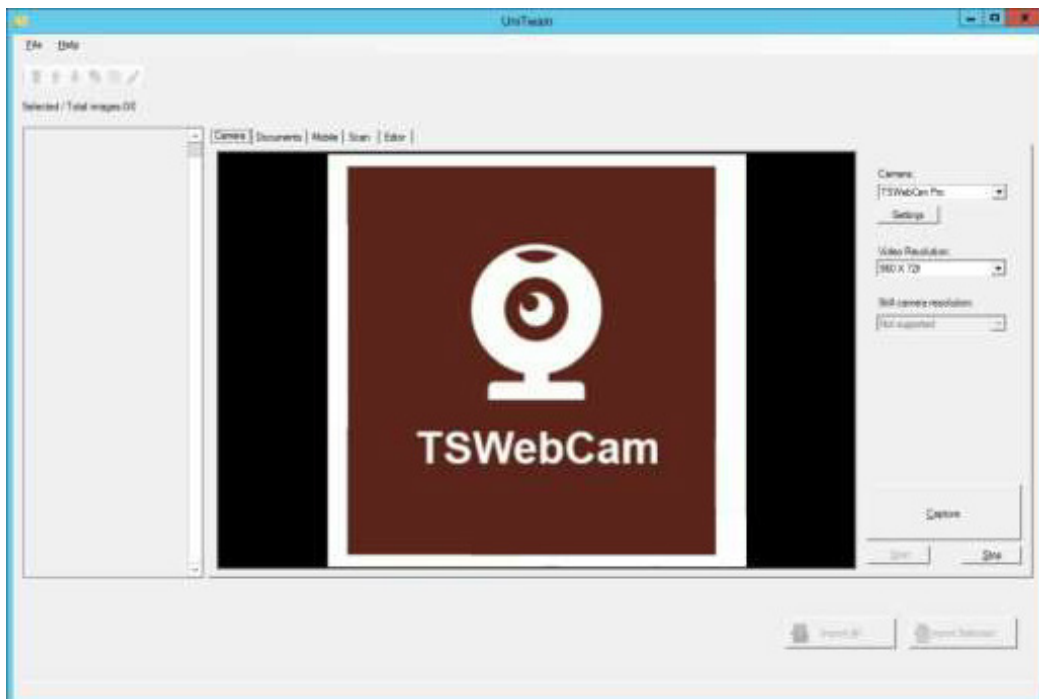
The server part will be installed as an actual webcam device and that way it should be visible in the device manager and in all webcam applications that are looking for an actual webcam device.

After you select it and run your application it will communicate with the client part installation and transfer the image from the camera device installed on the local workstation.

Example

In this example, user chooses TSWebCamPro as a source in an application that supports webcams.

For the example we are using the Camera module of our UniTwain software and the locally installed camera is a virtual camera set to show the TSWebCam picture.





TSWebCam settings

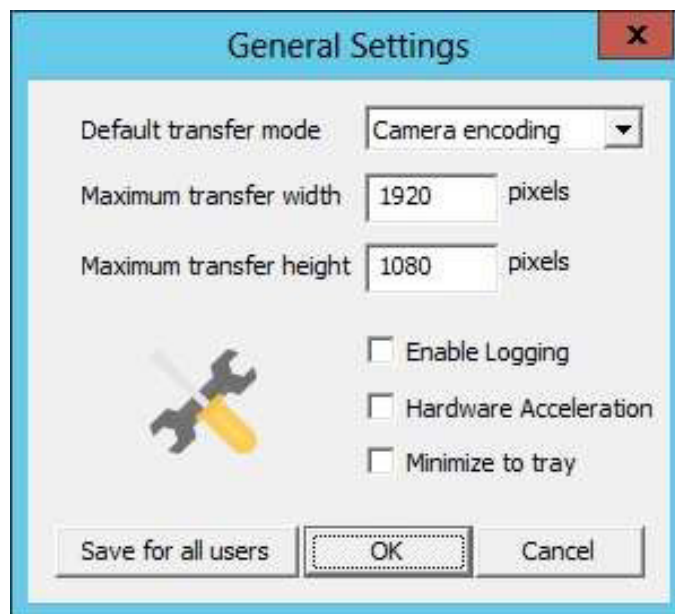
How to open

There are two ways to open the TSWebCam settings on the server:

1.) To open the TSWebCam settings on the server open Start-All Programs-TerminalworksTSWebCamPro server-TSWebCamPro settings.

If you are using a windows server 2012 operating system or newer you can find it under All Applications, TSWebCamPro settings.

This will open the general settings window



You can access the general settings from this window allowing you to set some default parameters that you can apply for all users if needed.

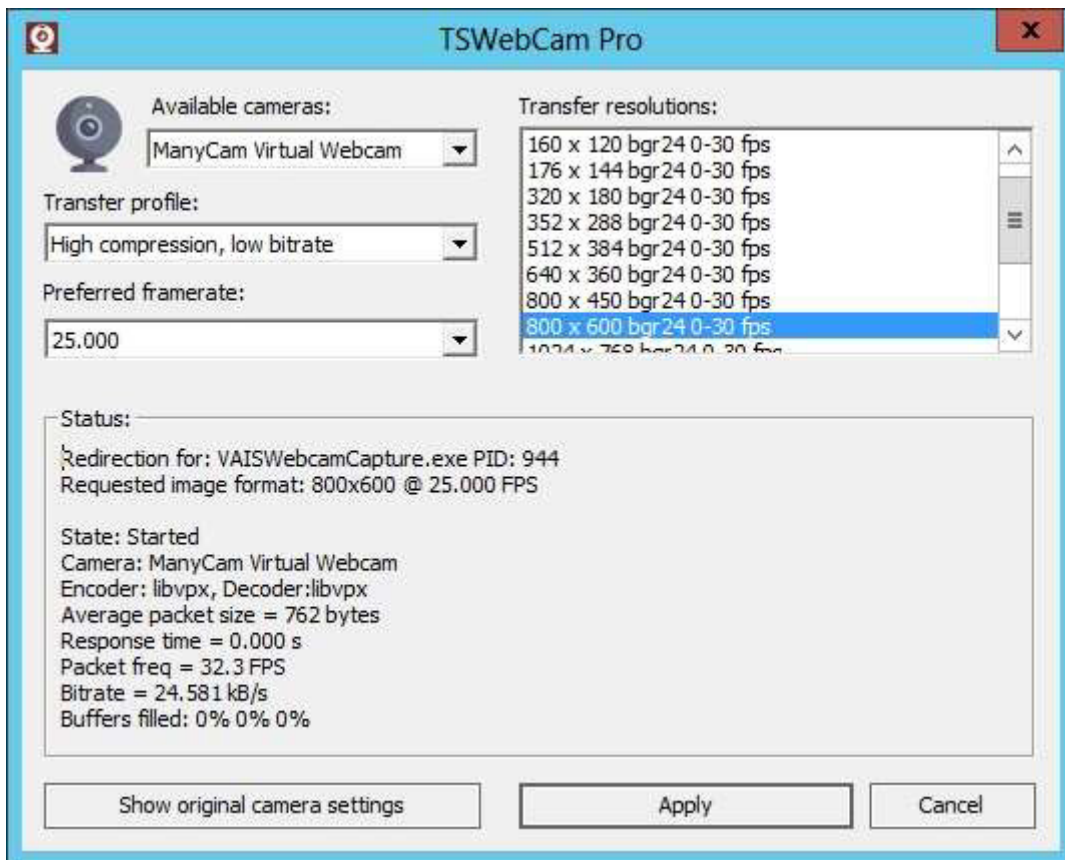


2.) The other way to open the settings is to open them from the application that you use. In most cases applications can open the webcam settings directly when the camera is selected.

In this setting window you can select the local camera, resolution, framerate and transfer profile related to the current local camera selection.

You can also access your local camera driver through the same window by clicking on the Show original camera settings button.

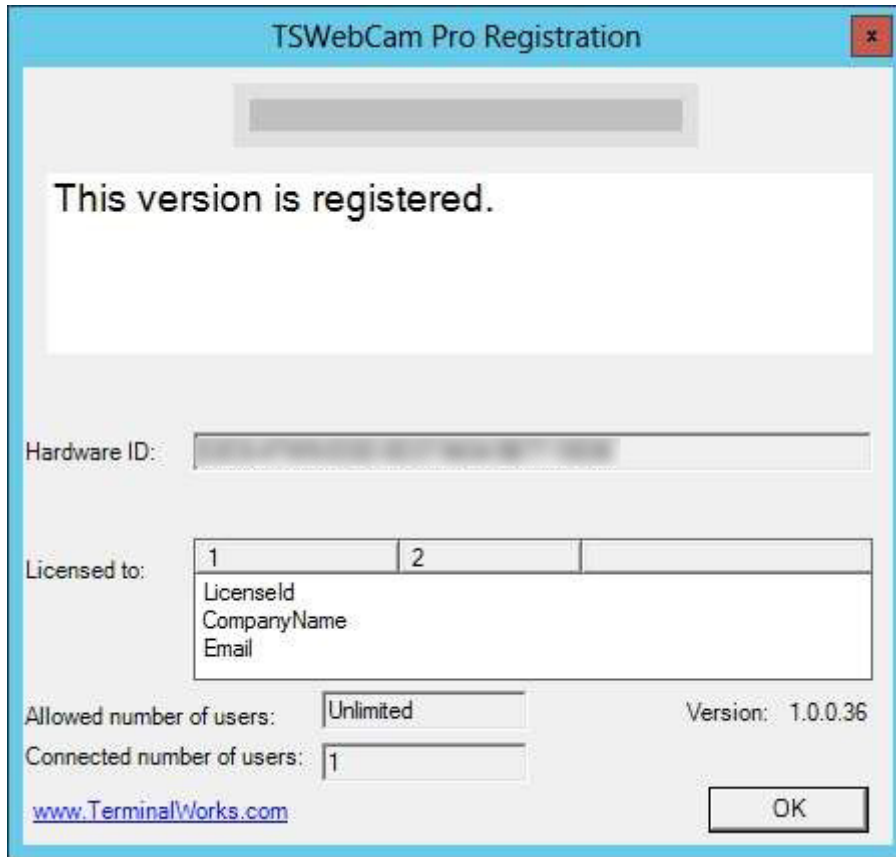
The window also has a real time information section where you can see the transfer rates, application information etc.





TSWebCamPro license registration

In the TSWebCamPro license registration window you can find your hardware ID to generate your license, check the status of your current license and also load the license.



For all additional information and/or assistance with this product feel free to contact us.