

User Guide



UniTwain Usage Guide





Content

- [Driver requirements](#)**3
- [Installation](#)**4
- [How does it work?](#)**5
 - [Example](#)5
- [Unitwain select source options](#)**5
 - [Documents](#)5
 - [Camera](#)8
 - [Camera panel](#)8
 - [Mobile](#)10
 - [Scan](#)11
 - [Scansnap bridge](#)12
- [Settings](#)**14
 - [Settings Tabs](#)14
 - [Camera settings](#)14
 - [Tab settings](#)15
 - [Selection](#)15
 - [Mobile Settings](#)16
 - [General Settings](#)16
 - [Help](#)17
 - [About](#)17
 - [License](#)17



Driver requirements

UniTwain supports the following Microsoft Windows operating systems:

- Windows 7
- Windows 8
- Windows 10
- Windows 11
- Windows Server 2008 R2
- Windows Server 2012
- Windows Server 2012 R2
- Windows Server 2016
- Windows Server 2019
- Windows Server 2022

Note: Both 32bit and 64bit operating systems are supported. UniTwain requires a minimum .NET 2.0 framework to function properly. In case you experience any issues please make sure that .NET is installed.

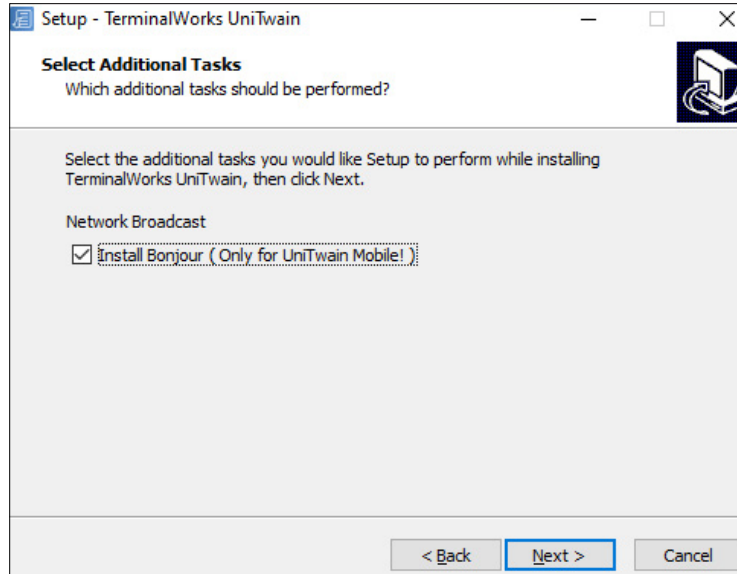


Installation

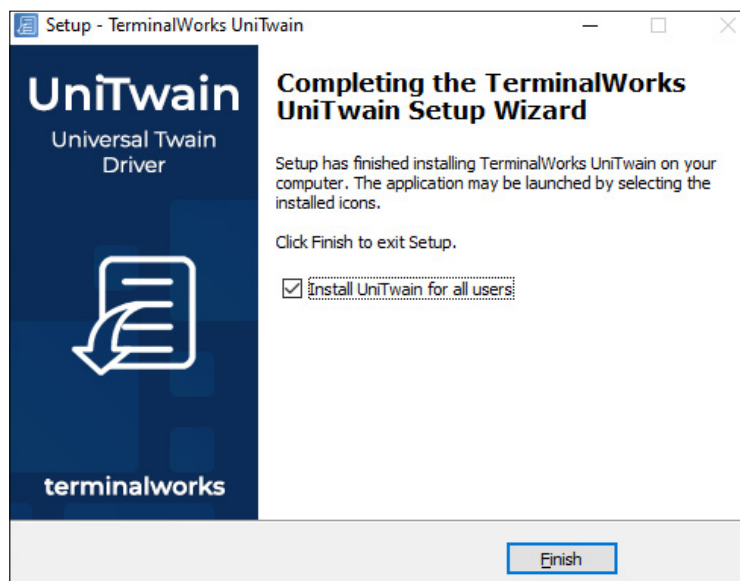
The UniTwain installer comes as an EXE or MSI file. After selecting the installer you prefer the installation should be pretty straightforward. A few times Next, Install and Finish.

During the installation, you will be asked about two things:

- The installation of Bonjour which is only necessary if you plan on using UniTwain Mobile, as it is required for broadcasting. If you do not have any plans to use UniTwain to import pictures from your mobile phone or tablet devices simply deselect it and proceed with the installation.



- The option to Install UniTwain for all users. If using UniTwain in a Terminal Server Environment most scanning applications look for the scanner drivers in the user profile folder. The option below allows those drivers to be placed in the profile path for each user.



And that's it! UniTwain should now be visible as an available TWAIN scanner on the machine you installed it on.

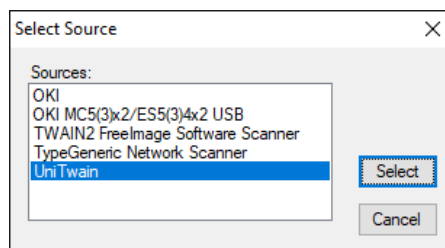


How does it work?

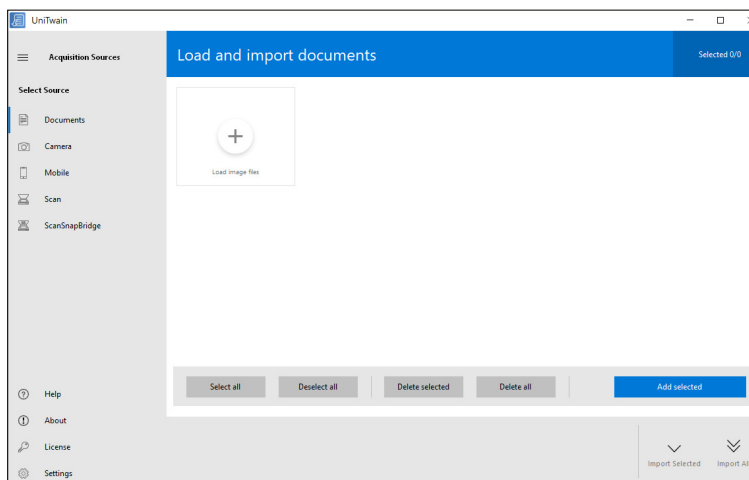
UniTwain is a virtual scanner that appears in your application just like any other scanning device. By scanning from it, the UniTwain interface will appear, which allows you to import documents, images, snapshots from cameras, pictures from your mobile phone, and even scans from other scanners, including ScanSnap, and then returns all those images back to the application. This enables you to import any type of document directly into your application as if it was directly scanned into it.

Example

In this example, using a 3rd party scanning software, the user selects Unitwain from the list of scanner drivers installed on the PC.



After initiating a scan, the Unitwain interface will pop up, allowing you to choose your preferred import option.



UniTwain select source options

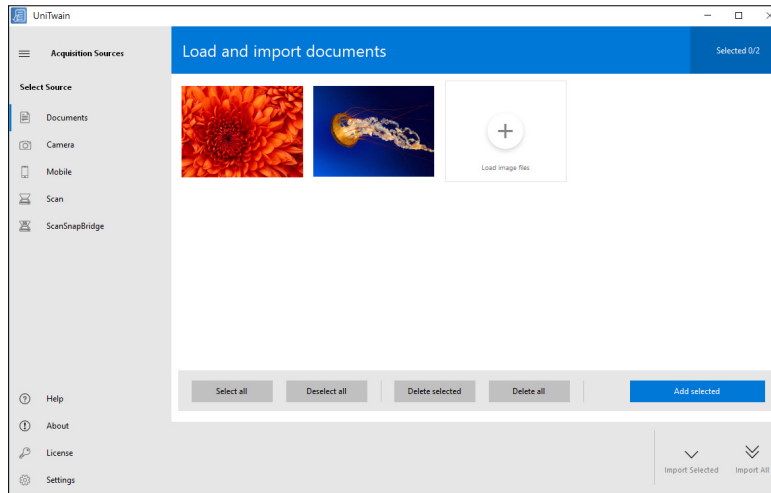
Documents

This is the first selection listed on the left side of the interface. It is used for importing images and/or files from your PC. You can add files by clicking on the Load image files button or simply by dragging supported files into the UniTwain Interface.

Unitwain will naturally allow you to import all image formats along with the option to import PDF files as well.

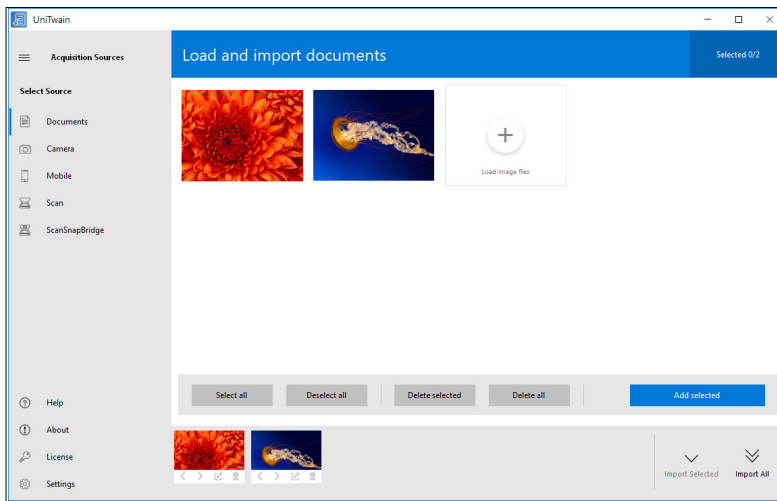


Unitwain - Usage Guide

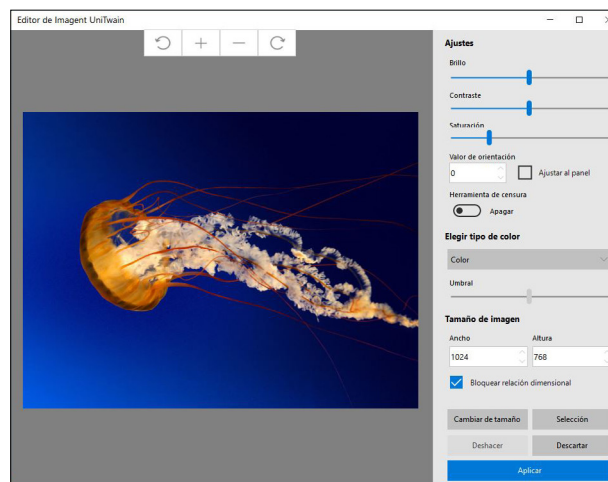


As shown in the example image below, the pictures are added in the middle of the screen. From this point you can go through an additional selection process if needed.

Simply select the images you would like to keep and add them either by double-clicking on them or using the Add selected button.



That will move the selected images to the bottom of your screen, where you can arrange them in the order that you would like to import them into your application and gives you an option to do some basic editing if needed. The editor is opened either by right-clicking on an image and selecting edit or by clicking on the button that appears on the images themselves.

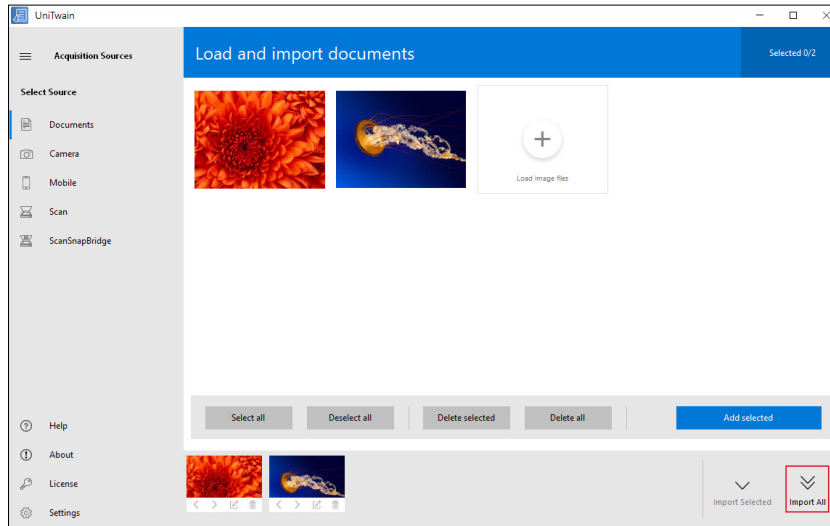




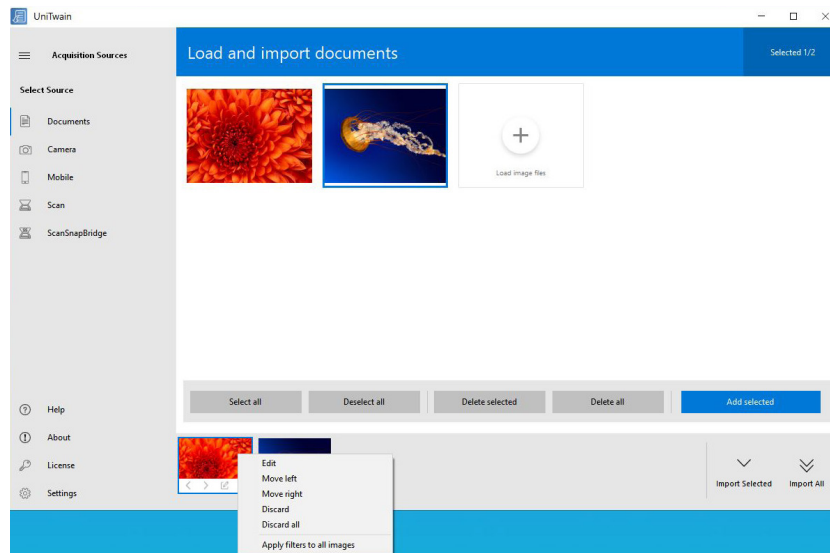
UniTwain - Usage Guide

Brightness is the relative lightness or darkness of a particular color, from black (no brightness) to white (full brightness). **Contrast** is the difference between light and dark. **Saturation** is the intensity of color.

When satisfied with the image selection, all that is left is to click on the Import All button to import them into your application. You can also import the images individually by selecting them and clicking on the Import Selected button.



With the option **move left** and **move right** we can move the images. As we line up the images, this way they will be imported into the application.

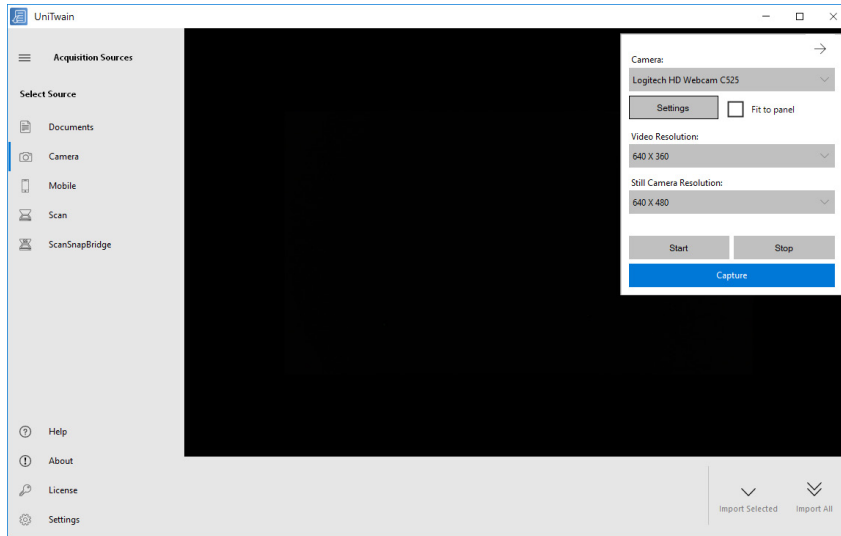


With the **apply filters** option, we can put the applied style on all other images.



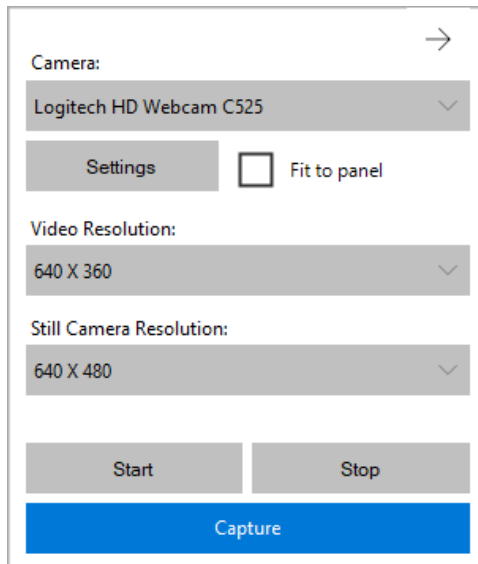
Camera

The Camera tab is the part of the program used to capture images from your web camera. It is the most widely used component of Unitwain.



Camera panel

In our example there is a Logitech camera used as shown in the image below:

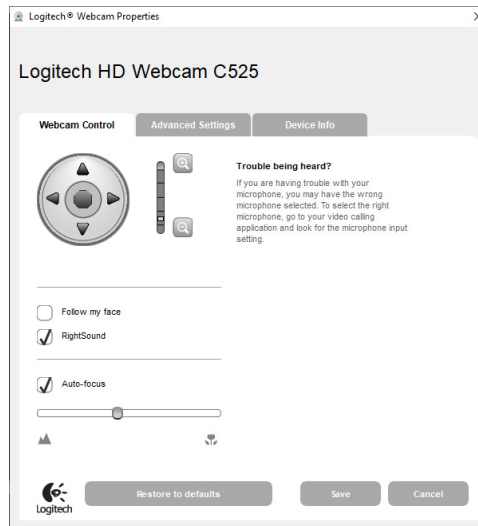


The first option will list all the available cameras on the PC where Unitwain is running, allowing you to select one.

The settings button below allows you to open the camera native driver and see all the settings offered there depending on your camera model. (In our example it is the Logitech webcam).

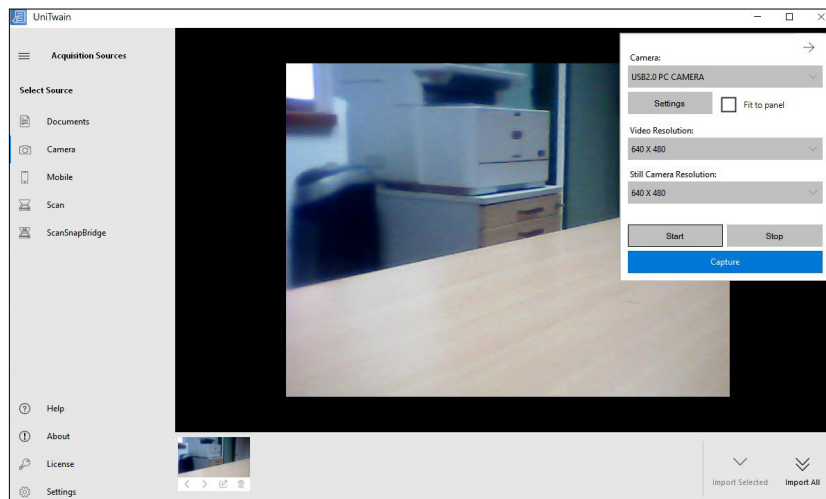


Unitwain - Usage Guide



If you do not need to alter any specific options Unitwain allows you to change the most common ones like video and still camera resolution in the panel itself.

The Start and Stop buttons are used to start/stop your device feed.



By clicking the capture button you take an image and you can see it in the bottom part of the Unitwain window where you can again edit it if needed and Import it into your application.

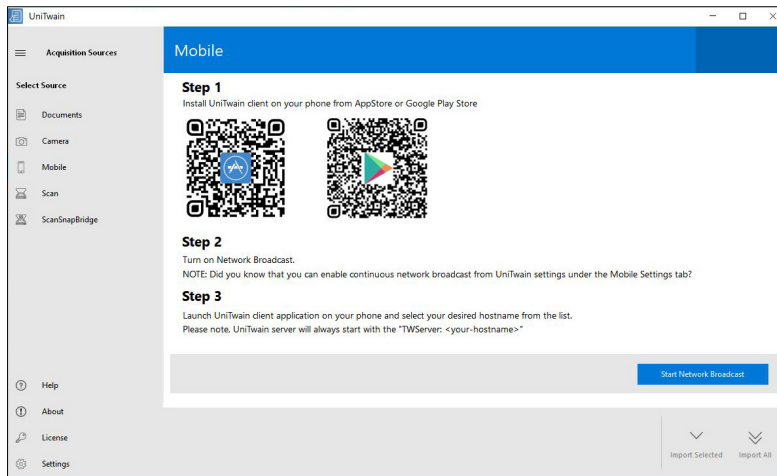
Alternative ways to capture an image:

- Click on the screen with the image itself, suitable when you minimize the setting panel
- Using the C key on your keyboard
- Or using a button or switch on your device itself. Unitwain is designed to recognize the button pressed on the device itself with most of the available camera models available on the market.



Mobile

The mobile tab is used for importing pictures from your mobile devices or tablets on which you have the UniTwain client application installed.



On the screen above you can see that certain steps need to be taken to use the Mobile option.

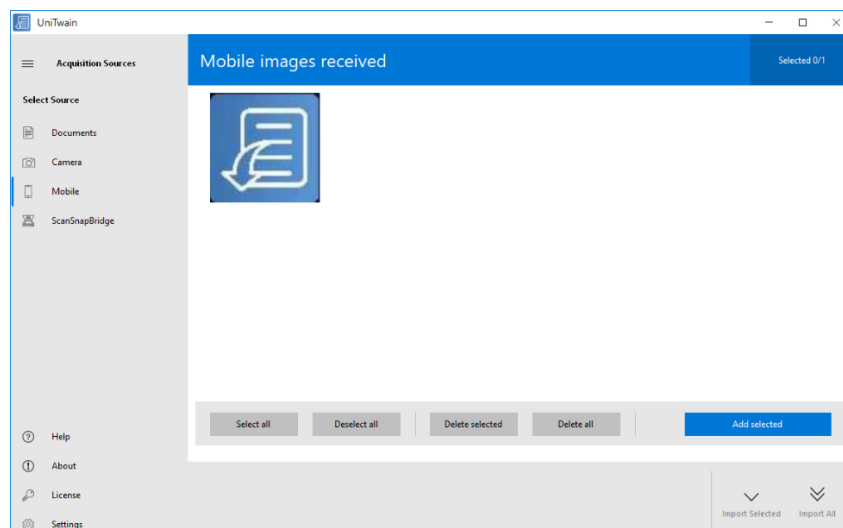
1. You need to have the UniTwain client installed on your mobile device. The application can be found on Google Play Store or Apple Appstore depending on the operating system that you use on your mobile devices connected to the same network.

Download links with further explanation on the client parts can be found on these links below:

[Android Client](#)
[Apple IOS client](#)

2. The Network Broadcast option has to be enabled in order for the computer with UniTwain on it to become visible as a selection on the mobile device from which you are trying to import images. To enable this option click on the Start Network Broadcast button or open the Help menu and click on Options.
3. The only thing left to do is to launch the mobile application and start importing pictures

Once you select the picture on your mobile device and send it, it will appear in UniTwain like on the print screen below:

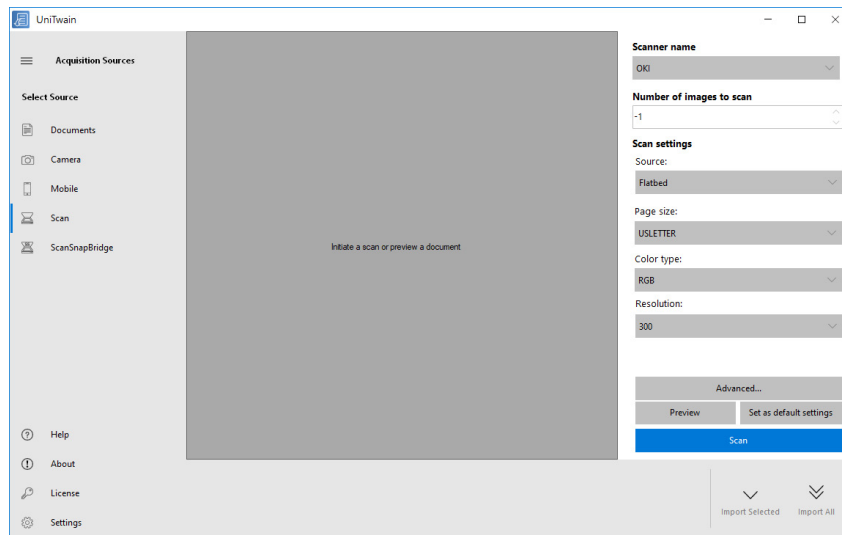




At this point, you can use the same approach to select the images required (if more than one) and add them to the selection. That offers you the same editing options and finally to import them into your application.

Scan

Unitwain Scan window allows you to scan from other scanners, and then returns all those images back to the application.



The main window offers the user to adjust the scan settings on the right.

Naturally, the first option is the Scanner name where the user can pick one of the available devices on their PC with Unitwain running on it. In our example, we used an OKI scanner.

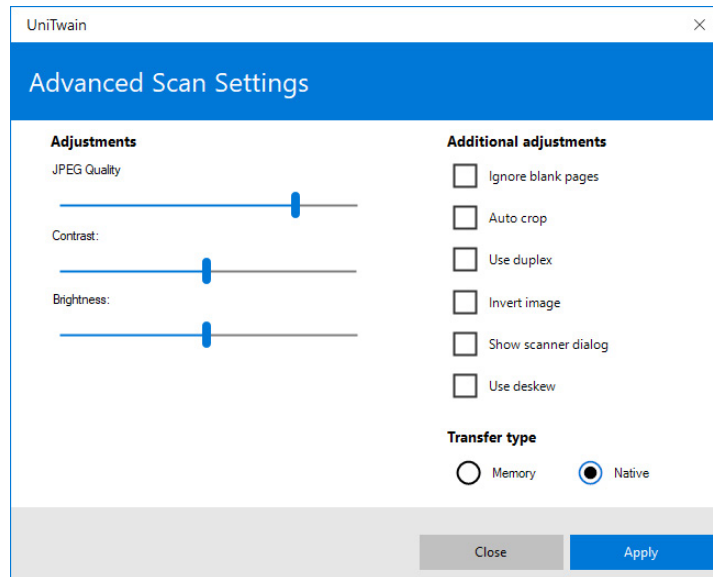
- Number of images to scan is used when you want to particularly determine the number of pages to be scanned if there are more placed in the scanner feeder.

Note: If a higher number is entered than the number of pages in the device, Unitwain will scan as many as there are. Keeping the value at -1 scans all the available pages in the feeder.

- Source option refers to either Flatbed (Glass), ADF (feeder), or Auto.
- Page size option refers to the actual page size of the scanned images.
- Color type can be RGB, Gray or B&W.
- Resolution (DPI) that is displayed with a number

Note: All values presented under the options mentioned above can vary depending on the selected device and its capabilities.

Clicking on the Advanced button offers you some other scanner related options and the interface is shown below.



On the left you can adjust the JPEG Quality, Contrast and Brightness of the scanned image and all 3 settings will affect the way that your image looks.

The right side offers you other scanning options that depend on the device driver:

- Ignore blank pages: if enabled the blank pages will not be imported
- Auto Crop: a feature available with a majority of scanners that crops the edges of your image making it look cleaner and more precise
- Use duplex: if enabled your pages will be scanned double-sided
- Invert image: the scanned image will be processed with the colors inverted
- Show scanner dialog will show you the scanner driver dialog with all the options and capabilities of your device available in it
- Use deskew: a feature that tends to fix the issue of misplaced pages in your scanner, images will have the text/images correctly and horizontally aligned.

Furthermore, you can choose the data transfer type between the “Memory” type and the “Native” type.

Memory type scans directly to the computer’s memory. Native type scans directly to the file and is considered to be more compatible with a wider variety of scanners.

The preview button will show you the preview of your scanned image and the Set as Default setting button will save your current selection for future use.

Scansnap bridge

This option allows the users to access their Scansnap series scanner devices. As you might know, the Scansnap series does not have TWAIN standard drivers available to it and it uses the Scansnap Manager provided by Fujitsu to initiate a scan and save an image.

That can cause an issue here and there as it limits users to use the Scansnap application to scan their documents.

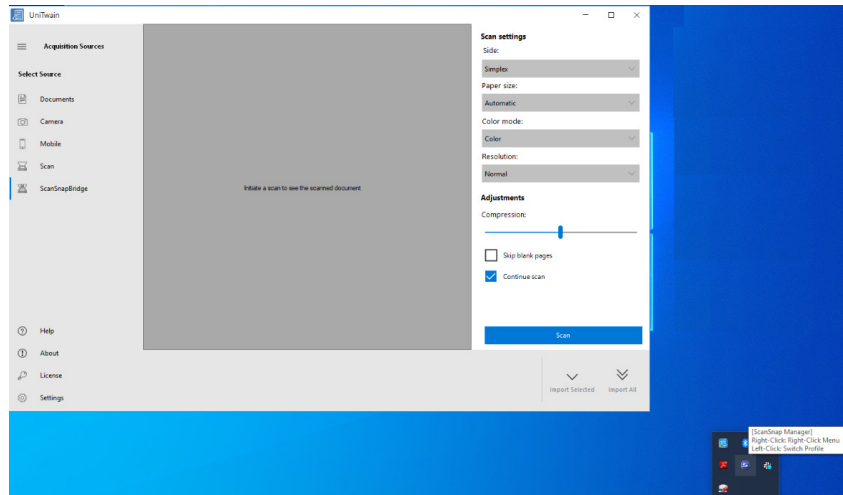
The Scansnap bridge feature in Unitwain bypasses that limitation and allows the use of the Scansnap series devices with practically any scanning application on the market.



Unitwain - Usage Guide

The only requirement is to have your Scansnap Manager application up and running and working properly with your device.

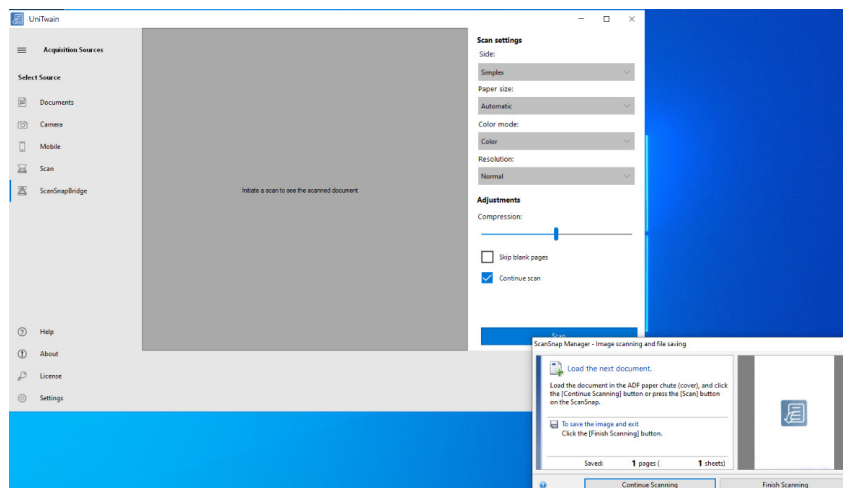
On the image below you can see Unitwain up and waiting to initiate a scan, you can also check if your Scansnap Manager app is running by checking the icon in the lower right corner of the screen.



Before doing the actual scan, you can see that there are some scanning options available to select from on the right side.

All the options are related to the actual scan, they depend on the users' preferences and needs and are pretty much self-explanatory.

When ready you initiate the scan by hitting the Scan button. That will start the Scansnap interface with a small preview of your document.

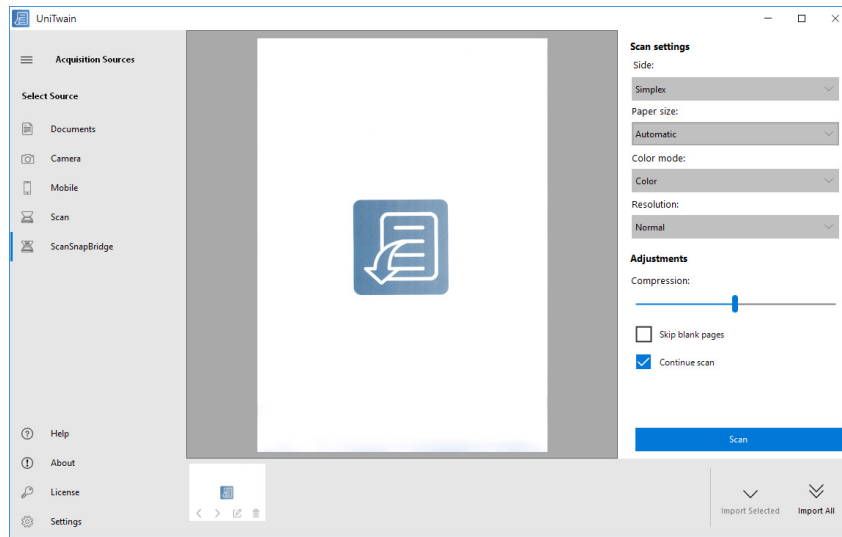


After you are done with your scanning and if you had the Continue scan option enabled you will need to confirm it by clicking on the Finish scanning button in the Scansnap Manager interface and your image will be imported into Unitwain.

If the Continue scan option was disabled the scanned images will get imported into Unitwain immediately after the scan.



Unitwain - Usage Guide



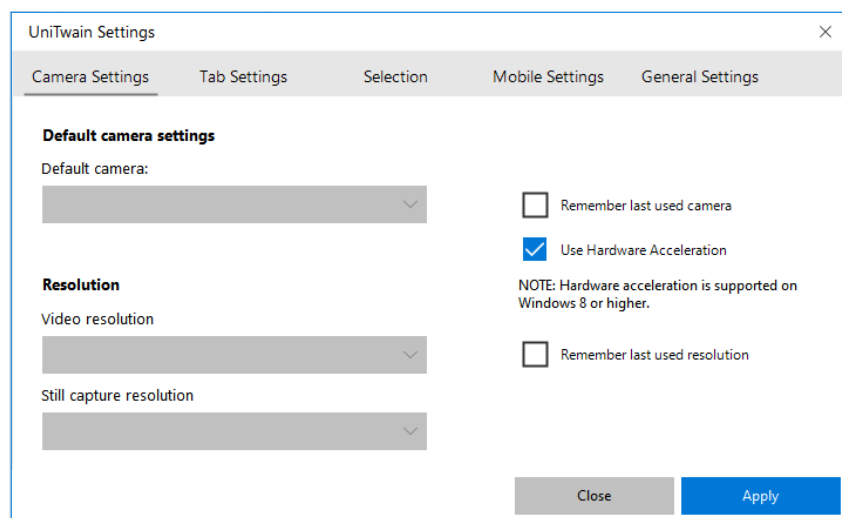
Again, as expected, the images will get added to the bottom of the Unitwain window and allow you to do some final editing and selection before hitting the Import selected or Import All button to input the images into your application.

Settings

The Settings icon in the lower-left corner of the Unitwain window opens up the settings interface allowing you to customize and preset settings in Unitwain allowing you to quickly use it for your everyday work without the need to adjust the setting upon every use.

Settings Tabs

Camera Settings





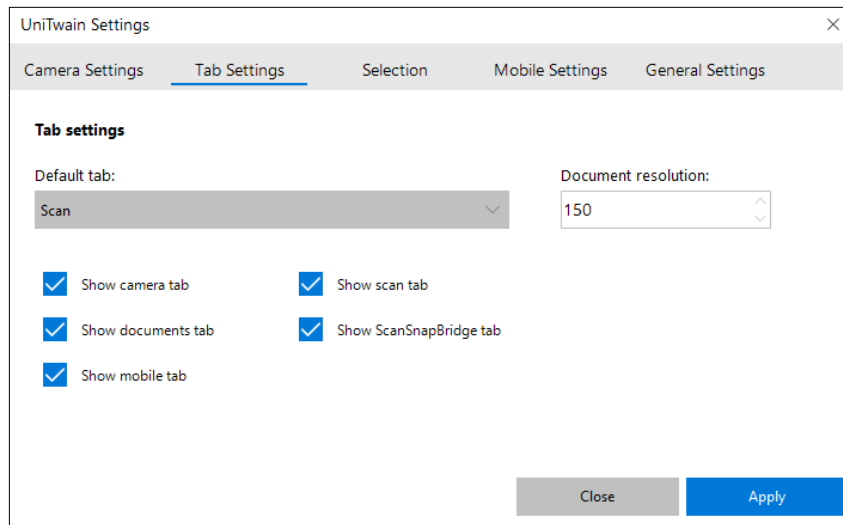
Default camera selection allows you to select your default camera so that it is selected whenever you start Unitwain.

The Resolution allows you to set your preferred resolution as well as for video and for Still capture.

You can also set Unitwain to remember the last used settings for your camera selection and resolution by enabling the options on the right.

Use **Hardware Acceleration** allows you to use an HD camera. It Supports Windows 8 or higher.

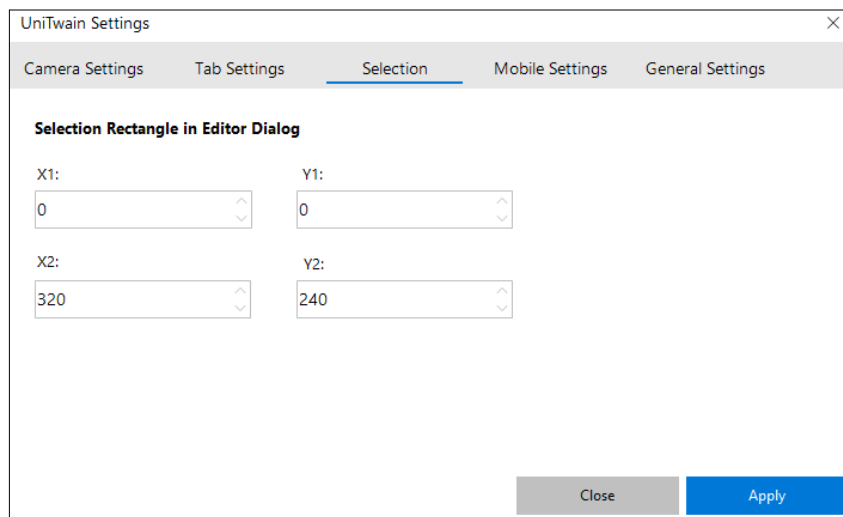
Tab Settings



The settings here allow you to customize your Unitwain interface by selecting the tab to be selected by default whenever you start Unitwain.

And to select your default resolution for all documents being scanned through Unitwain. You can even disable them to not show in Unitwain at all by removing the checkmarks next to each tab.

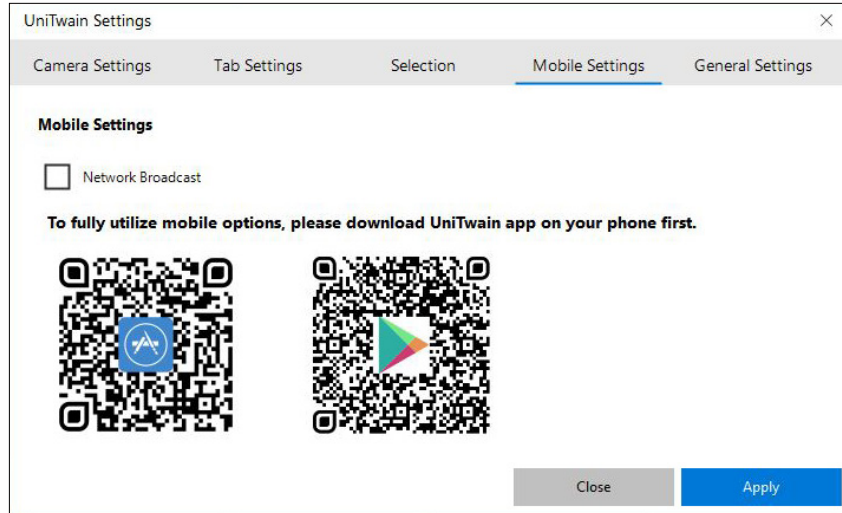
Selection





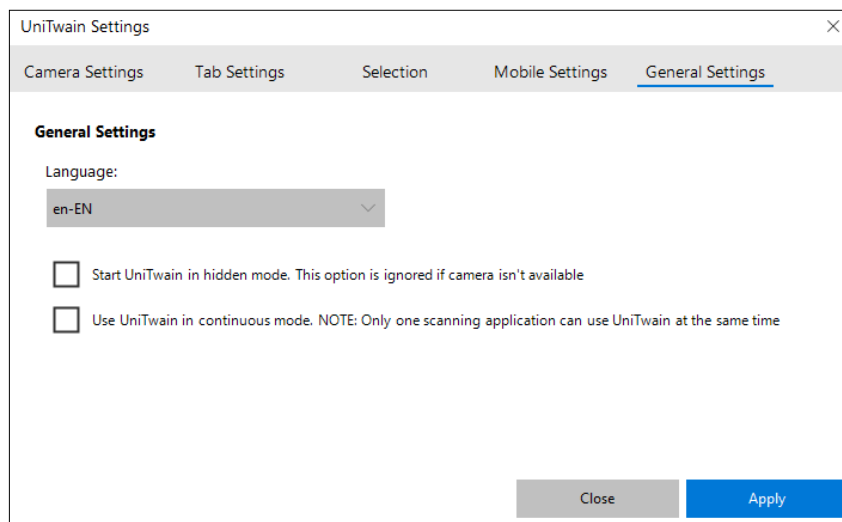
Allows you to precisely set the selection on your documents when you are editing them.

Mobile Settings



The Network broadcast option here allows you to enable the network broadcast automatically whenever you start Unitwain.

General Settings



On the general settings tab, you can select the language of the software. If your preferred language is not among the provided choices you can contact support@terminalworks.com to discuss a possibility for adding a translation.

The start Unitwain in hidden mode is suited for users that generally use the camera functionality in Unitwain only. The option allows Unitwain to run in the background and when called for automatically takes an image from your camera and import it into the application calling it.



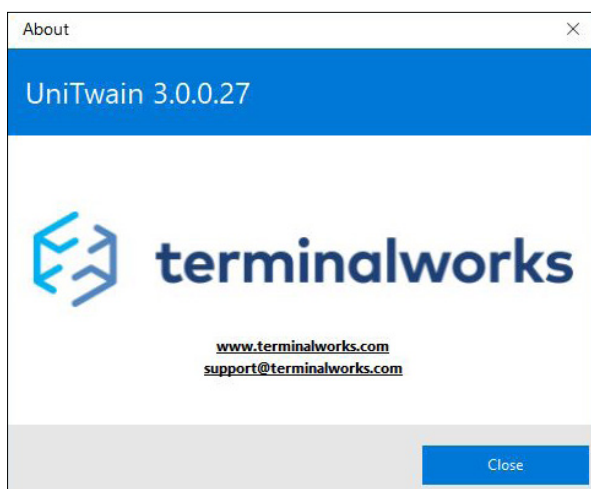
Unitwain - Usage Guide

The use of Unitwain in continuous mode keeps Unitwain running in the background so that it can be easily called again to take another picture. The feature was added to allow faster image capturing for users that need to make lots of scans. It is most commonly used with the Use Unitwain in hidden mode so that users that only take pictures with their webcam can do it seamlessly even with a push of a button on their webcam.

Help

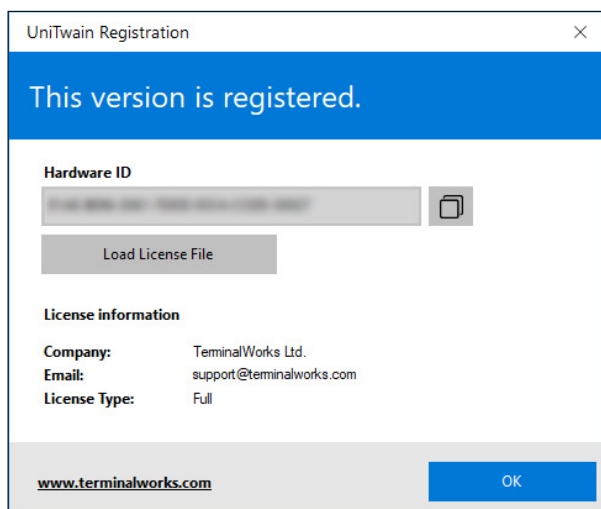
You can access this document by clicking on help button.

About



Allows you to check the version of your software along with links for our website.

License



This button shows you your licensing information and is also used to apply the license by clicking on the Load License file button and browsing and selecting the correct file.